

# Mozambique Fly Away 2007

Tuesday, 09 January 2007  
V\_5

Dear Moz Fly Away Participant

Hi - my name is Horace and I would like to give you as much information as possible and minimise the likelihood of questions arising - so please be patient as this "briefing" is fairly long but comprehensive. A good read (a couple of times) will be worth your while.

I trust you will be as excited as I am about this adventure. Having done one already - its lekker! ☺

**At this point I ask you to please disregard all correspondence prior to this date.** Not doing so may create confusion. This is the latest version (V\_5) with a few changes and additional map info.

I have put in a fair amount of effort to put this venture together. I respectfully request that you please provide me with as much data in the Excel spreadsheet as is possible first time around. In the past, I have wasted much effort having to call or mail guys merely because they superficially perused their correspondence. Now that I have the awkward Sergeant Major "attitude" out of the way - here goes! ☺

This fly away to Mozambique includes RV Club members and also my own mates who have pestered me for some time to plan this venture. This fly away is meant to be a relaxed event and I want you all to have fun and enjoy yourselves. The RV guys ought to take control of themselves and I will take care of the rest of the participants.

Mr Alves Gomez, the President of the Aero Club of Mozambique has assisted me greatly with my preparation and most importantly has validated information like fuel availability and has used his influence to get us very spotty rates at Bazaruto Lodge. Thanks Alves.

Lastly - I will indicate the changes to the version 4 document clearly by the word **Changes** (in bold and underlined) **with a numeral and a date** highlighted with red. I will indicate that text (information) change with a blue font colour and black border.

## Change History

Page 5 - Additions:

Google Earth map of Maputo and Inhambane

Page 9

**Bazaruto Lodge:**

**Change 2 dated 4 Jan 2007:** Payment can be made at Bazaruto either in US\$ or by means of your credit card on completion of your stay.

---

---

## House Keeping:

1. **Visas:** Please arrange visas in advance - you can buy at Maputo airport but it really slows things up and we would like to be on our way up the coast ASAP. Your local travel agent should be able to help with this.
  - 1.12. **Alves comment:** Visas are cheaper if you buy them at the airport. We usually help on setting up that matter.
  - 1.13. Take into account that on arrival each aircraft will have to pay USD 50 for migration and USD 10 for customs.
2. **Insurance:** Please advise your insurance company that you will be in Mozambique - some aircraft policies do not cover Mozambique.
3. **Malaria:** The last few trips undertaken at this time of year - I have not taken anti-malaria tabs. It is winter and the breeze off the coast is usually sufficient to keep the mozzies away. A tin a Tabard/Peaceful Sleep is good to take along.
4. **Alves comment:** He agrees.
5. **Fuel:** I have spoken to Alves re making Avgas available with Air BP Mozambique i.e. a truck with fuel drums at Inhambane. Fuel is available at Maputo and Vilankulu. They accept BP fuel cards, SA Rand and US Dollars cash.
6. **Accommodation:**
  - ▶ I have booked 20 double rooms - so **your accommodation is already booked at all the lodges according to the itinerary laid out on page 4.**
  - ▶ Once you have paid and I receive a copy of your payment advice, you are then allocated accommodation.
  - ▶ Your room number will be given to you once you arrive at the Mozambican lodge.
  - ▶ **Please call Bushveld Lodge.** Bushveld Lodge will allocate you your room number and price (ask for the 10% discount). I had to do this as the accommodation standards (and prices) vary.
  - ▶ There is no need to call the other lodges at all. Room standards and prices are consistent.
  - ▶ What is required from you is your payment.
  - ▶ You will note that Bushveld Lodge, Barra Lodge and Bazarutos' contact data as well as reference numbers for all bookings are available at the end of this document.
  - ▶ The lodges accept Visa and Master cards plus cash - Rand, Dollar Pounds etc.
7. **Excel Spread sheet:** Please add your data to the Excel spreadsheet attached. There are coloured tabs at the bottom of the spreadsheet. Please toggle between them and provide the data requested.
8. **CAA Part 91 Sub Section 3:** Also attached (Docs in aircraft)

## General

1. Please note as ADM (Airports Company of Mozambique) is the main sponsor it is compulsory for all aircraft to clear into Mozambique at Maputo where there will be an official welcome. Members of the Mozambican Aero Club could join us on our fly away.
2. The Inhambane Aero Club will meet us at the Inhambane Airport and have offered to hangar as many aircraft as possible. I can vouch for their excellent hospitality and recommend you stay and enjoy the arrival party. Barra Lodge will do road transfers on our arrivals and departures.
3. We will be landing on suitable tar runways at all destinations.
4. Please note this fly away is on a first come first serve basis.

5. A fly away to Mozambique would not be possible without the assistance of the Mozambique Aero Club. The Aero Club has arranged a waiver of landing fees and parking fees for the entire trip. As many of you are aware the Mozambique Aero Club has had many of its assets depleted over the years. Our contribution will no doubt go along way to assist in their recovery programme. This donation of R300 per aircraft will be handed over as a lump sum at Maputo Airport by cheque.
6. Entrance fee for this years fly away is R550.00 per aircraft and is non refundable. This is made of R250.00 logistics planning (for Horace) and R300.00 donation to the Mozambique Aero Club - aircraft restoration project. The full amount ought to be transferred at your earliest convenience to the account below to guarantee you your participation.
7. Horace: (Total into account R550-)

Account Name: HA Blok  
Bank: Standard Bank  
Branch: Brooklyn Square  
Branch Code: 01-12-45-12  
Account Number: 011808039

In your Reference - please give your name this is very important guys.  
Fax off (or email) deposit to 012 3463674

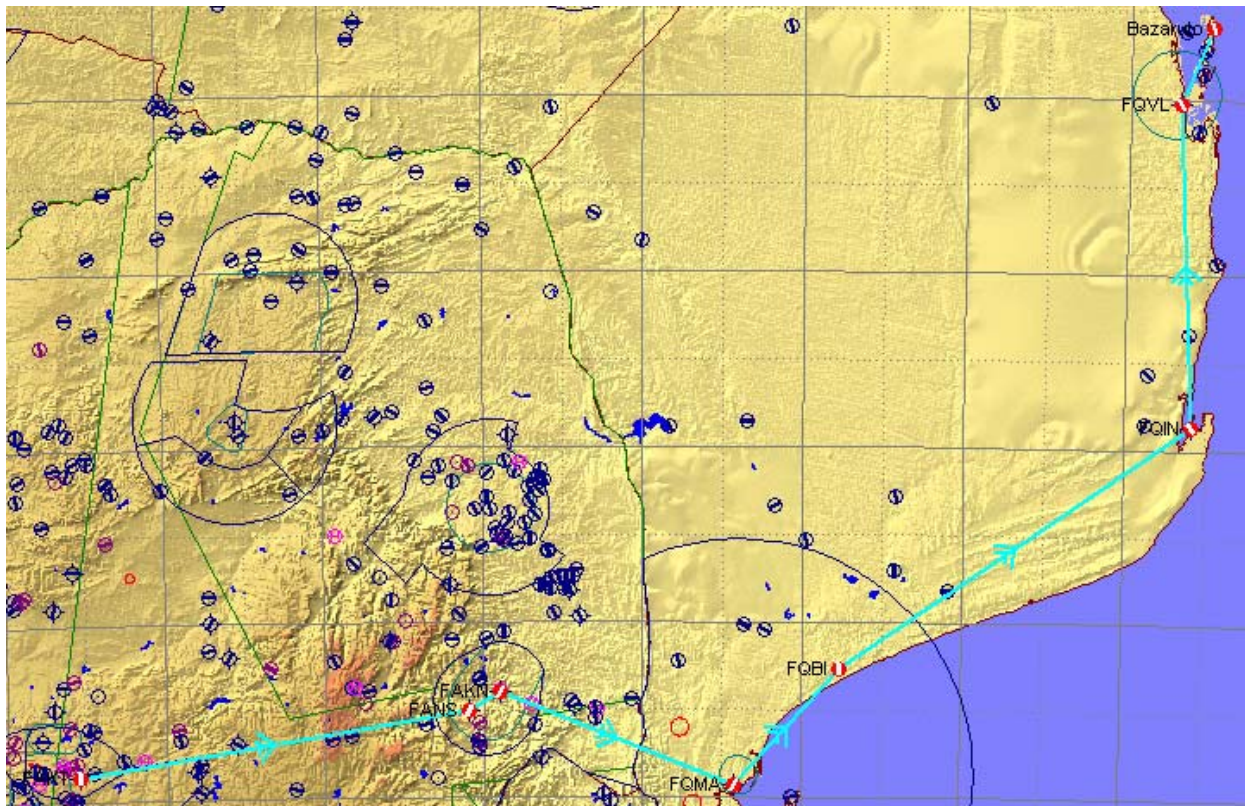
8. Please ensure you have the following updated documents:

- ▶ Passports,
- ▶ Visas,
- ▶ Pilots License and
- ▶ Aircraft documents.

### Orientation/Route Map

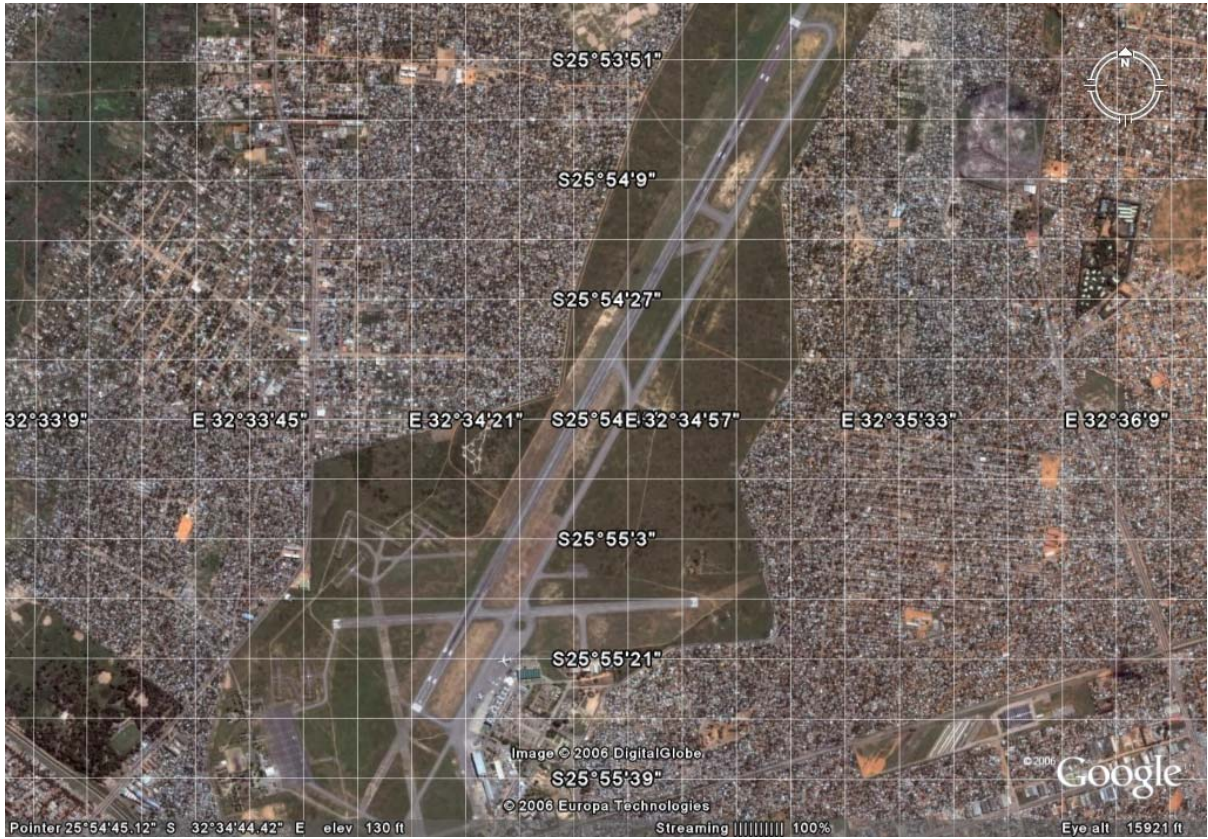
I have included all airfields as a courtesy - the map reflects all airfield options in Mozambique.

Links: <http://www.aircraft-charter-world.com/airports/africa/mozambique.htm>



I have used my PA22 - 150 data for the table below but it's a quick guide for some mental Nav ☺. The longest leg to Vilankulu is 199 nms between Maputo and Inhambane.

Identifier	Freq.	Ground Elev. (feet)	True AirSpeed (knots)	Magnetic Track (deg)	Leg Distance (nm)	Accum. Distance (nm)	Distance Remain (nm)	Leg Time	Elapsed Time
FAKT	120.65	4586	100	98	135	0	571	01:21	00:00
FANS	125.2	2901	100	74	12	135	436	00:07	01:21
FAKN	119.2	2829	100	130	86	147	424	00:52	01:28
FQMA	118.1	144	100	60	53	233	337	00:32	02:20
FQBI	127.3	131	100	73	146	287	284	01:27	02:52
FQIN	118.4	30	100	13	111	432	138	01:06	04:19
FQVL	118.3	46	100	36	28	543	28	00:17	05:26
Bazaruto		33				571	0		05:42



**Maputo**



**Inhambane**

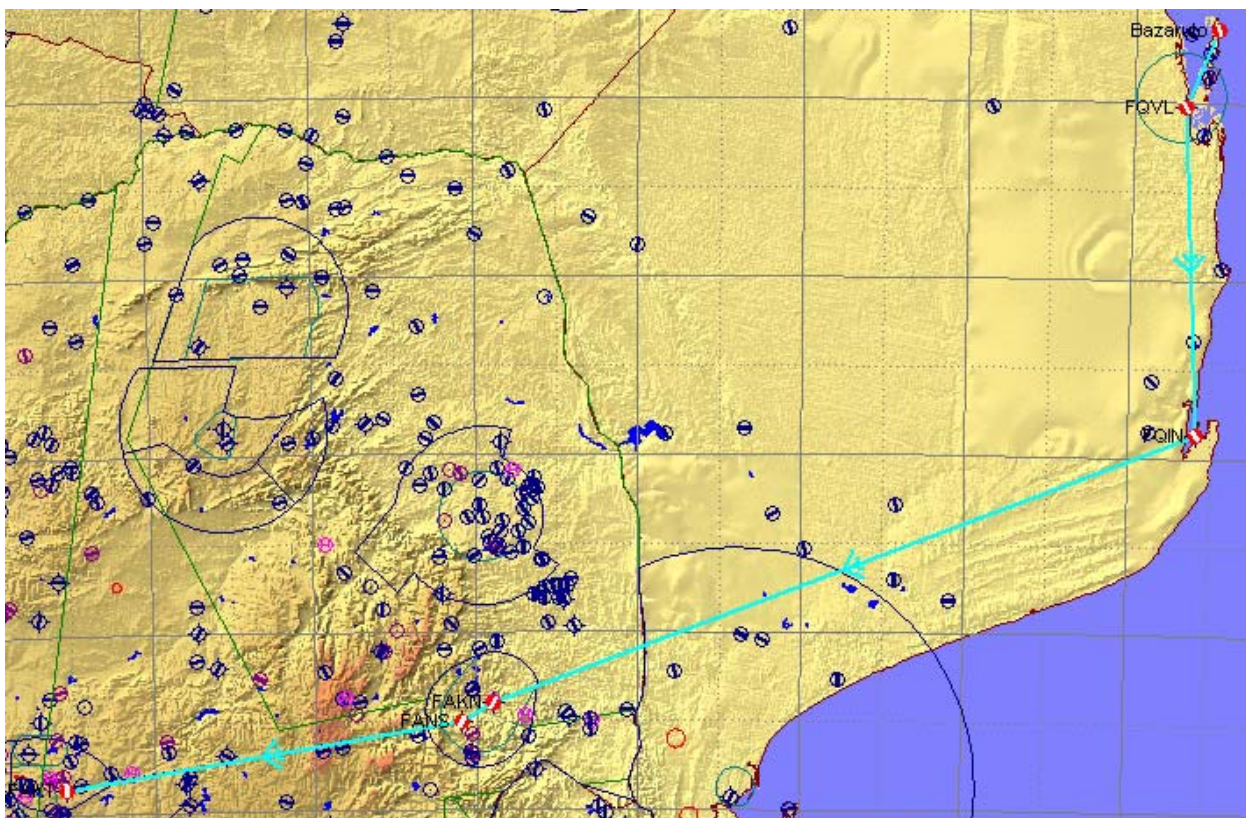
## ITINERARY:

9. This itinerary is a guide as to what will work for the smaller "lap en pyp" aircraft with limited range and serves as a guide.
10. **16 May 2007 (Wed) - Day 1:** Pre position at Nelspruit (FANS - Old Airfield) in your own time for an early departure 17 May. Please feel free to contact Bushveld Lodge for accommodation. Details on page 6.
11. **Briefing by Mark Jackson:** I respectfully request that pilots plan on being in Nelspruit on Wednesday 16th May for a briefing. This will be held at the Lowveld Aero Club 16 May at 19H00. The club will have braai packs and salad available for anyone wishing to stay on for a meal. Transport to Bushveld Lodge has been kindly arranged by Mark (Leading Edge Aviation). Cost? Will be advised.
12. **17 May 2007 (Thurs) - Day 2:** It will be an early rise. KMIA direct to Maputo. Immigration procedure and official welcome by the Mozambique Aero Club.
  - 12.1. The first group will depart KMIA at 0730,
  - 12.2. Second at 0800 and the
  - 12.3. Third at 0830.
13. **17 May 2007 (Thurs) - Day 2:** At Maputo - hand over a cheque from the group to Alves.
14. **17 May 2007 (Thurs) - Day 2:** Maputo to Inhambane. Some pilots prefer to route direct track to Inhambane (usually if they have passengers who are not feeling well) but most like to follow the coast line admiring the ocean and beach. Land at Inhambane and socialise with the Inhambane Aero Club. Transfer from Inhambane to Barra Lodge is inclusive.

**Links:** <http://www.barralodge.co.za/>  
<http://events.siyabona.com/mozambique-resorts-barra-beach-lodge.html>
15. **18 May 2007 (Fri) - Day 3:** The third day takes us from Inhambane to Bazaruto Island. Once again you can follow the coast line or fly slightly more inland (the coast bulges out quite a lot). If you wish you can refuel at Vilankulu before going to the Island or do that at your leisure over the next few days.
16. **19 May 2007(Sat) - Day 4:** The fourth day is a free day - you can spend the day at Bazaruto (Diving, horse riding) or fly over the islands - do whatever you feel comfortable with. There are plenty of places to see and visit.

**Links:** <http://www.pestana.com/hotels/en/hotels/africa/BazarutoHotels/Bazaruto/Home/>  
[http://www.e-gnu.com/bazaruto\\_lodge\\_mozambique.html](http://www.e-gnu.com/bazaruto_lodge_mozambique.html)
17. **20 May 2007 (Sun) - Day 5:** The fifth day - regrettably we leave Bazaruto for Inhambane (possibly via Vilankulu if you need to refuel).
18. **21 May 2007 (Mon) - Day 6:** The sixth day an early departure from Inhambane to Maputo and then on to KMIA and home. Some pilots will still have a long way to go so we want to be back in SA as early as possible. I will attempt to get Customs to assist us by making an official available to possibly facilitate a direct routing from Inhambane to KMIA.

19. The map below reflects this direct track route.



I have use a worst case groundspeed for a 90mph PA17. The longest leg on the return is 253 nms.

Identifier	Freq.	Ground Elev. (feet)	True AirSpeed (knots)	Magnetic Track (deg)	Leg Distance (nm)	Accum. Distance (nm)	Distance Remain (nm)	Leg Time	Elapsed Time
Bazaruto		33				0	538		00:00
FQVL	118.3	46	78	216	28	28	510	00:21	00:21
FQIN	118.4	30	78	193	111	138	400	01:25	01:46
FAKN	119.2	2829	78	266	253	391	147	03:14	05:00
FANS	125.2	2901	78	254	12	403	135	00:09	05:09
FAKT	120.65	4586	78	278	135	538	0	01:44	06:53

### South African accommodation:

- ▶ **Bushveld Lodge:** <http://www.bushveldlodge.co.za/>

By quoting the booking reference number - deduct 10% from the pricing below.

A 50% deposit is necessary to confirm booking for date in: 16\05\2007 date out: 17\05\2007

What we have left is 13 rooms in the executive lodge. Consist if 2 single beds.

- ▶ Bottom floor No E1 to E6. This is a 3 star grading @ R355.00 for 1 person or @ R400.00 for 2 persons (breakfast incl)
- ▶ Top floor no E7 to E12 this is an 5 star grading @ R475.00 for 1 person or @ R625.00 for 2 persons (breakfast incl)
- ▶ E13 is the V.I.P room consist of a double bed \@ R625.00 for 2
- ▶ Our **self catering chalets** comprises of 10 2 bed chalets @ R340.00 per night
- ▶ 3 chalets have double beds
- ▶ 7 chalets have 2 single beds

Consists of a kitchen and shower/toilet fully equipped\ serviced daily - fresh and clean. Each with its own wooden deck & braai facing the river.

Our **4 bed chalets** consist of 1 double bed and 1 single bunker bed @ R450.00 per night. Only 5 chalets left. Consist of a kitchen and shower/toilet fully Equipped\ serviced daily - fresh and clean. Each with its own wooden deck & braai facing the river.

Our **6 bed chalets** consist of 1 double bed and 2 single bunker beds @ R570.00 per night we have only 4 chalets left consist of a kitchen and shower/toilet fully equipped\ serviced daily - fresh and clean. Each with his own wooden deck & braai facing the river.

All self catering chalets are open plan.

Breakfast @ R55.00 per person

Lunch @ R40.00 per person

Dinner @ R75.00 per person

Even if u are booked in a self catering chalet u can have breakfast, lunch and dinner

### Mozambican accommodation:

- ▶ **Barra Lodge:** R514.40 per person per night (sharing), dinner bed and breakfast. Have already negotiated a 20% discount. This is the final price.
- ▶ **Bazaruto Lodge:** USD135.00 per person per night (sharing), dinner bed & breakfast. Total per couple per night= US\$270. Have already negotiated a substantial 33% discount. This is the final price. Please ensure you transfer US\$ from your bank.

Accommodation payment: (I encourage you to pay total amount ASAP)

**NB: To secure your accommodation, please contact the various resorts and transfer payments directly to the three lodges concerned and fax them copies of your payment ASAP.**

I recommend you keep your copy of the deposits and bring them with you on the fly away. Please be sure to refer to the booking reference number as we are getting group discount rates.

**Banking details:**

***Bushveld Lodge:*** (Must pay deposit by end December 2006)

**Name of account:** Bushveld Lodge  
**Bank:** ABSA  
**Branch Code:** 632-005  
**Account Number:** 01003040085  
**Booking Reference:** 16060

**Contact:** Colleen or Karen  
**Phone** 013 7415058  
**Fax** 013 741-3219

***Barra Lodge:*** (Must pay deposit by end December 2006)

**Name of account:** Barra Lodge Bookings CC  
**Bank:** Nedbank Midrand  
**Branch Code:** 168642  
**Account Number:** 1686 174 993  
**Booking Reference:** 011387

**Contact:** Lynette Martins  
**Phone** 011 - 3143355  
**Fax** 011 - 3143239

***Bazaruto Lodge:***

**Change 2 dated 4 Jan 2007:** Payment can be made at Bazaruto either in US\$ or by means of your credit card on completion of your stay.

**Contact:** Sheila Mossa  
**Tel:** + 258 21 305 000  
**Fax:** + 258 21 305 305  
**Email:** [sheila.mossa@pestana.com](mailto:sheila.mossa@pestana.com)  
[www.pestana.com](http://www.pestana.com)  
[www.pousadas.com](http://www.pousadas.com)

Here is fax I received from Pestana. Please note they wanted 25% payment within 5 days. I have obtained an extension until end of January 2007.

<b>Confirmation</b>		Ilha Do Bazaruto - Inhassoro Inhambane
<b>Pestana Bazaruto Lodge</b>		C/o Pestana Rovuma L Caixa Postal 4378
VAT reg No.: 400061615		Tel: + 258 21 305000 Fax: + 258 21 305305 e-mail: bazaruto.lodge@pestana.com
<hr/>		
To: HORACE BLOK	FROM: Sheila Mossa	
DATE: 12/12/2006	PAGES: 1	
<hr/>		
RE: Confirmation of Reservation		
I have pleasure in confirming the following reservation arrangements with you		
<hr/>		
Guest Name: RV CLUB FLY IN . .	Res Number: 0610311209	
Arrival Date: 18/05/2007	Departure Date: 20/05/2007	Total Nights: 2
No of Guests: 40	No Of Rooms: 20	
Payment Type: CASH	Reservation Status: UNCONFIRMED	
Booking Agent: 9999 Private	Group ID: R CLUB FLY IN	
12 X Room Type: STANDARD	Room Rate per Day: 270.00 (GRP USD Std)	
	Meal Plan: Food - Full Board	
8 X Room Type: SUPERIOR	Room Rate per Day: 270.00 (GRP USD Superior)	
	Meal Plan: Food - Full Board	
<hr/>		
Please Note:		
1. All rates include Vat		
2. No reservation will be made unless written confirmation is received.		
3. Confirmed reservations will be considered provisional for 5 days. During this period a 25% deposit needs to be made to guarantee the booking. After the 5 days provisional block and in case the deposit is not made it will be cancelled without prior notice.		
4. All reservations will be considered as a provisional status until a 25% deposit is received. The 5 days provision reservation policy will apply.		
5. The remaining 75% of the total amount is required no later than 7 days prior to arrival.		
6. Pestana Bazaruto Lodge reserves the right to cancel reservations without notice should the pre-payment policy not be adhered to.		
Cancellation Policy:		
1. All cancellations must be sent by written notice		
- Individual reservations		
1. In case of no-show a Full Stay cancellation charge will apply		
2. A full Stay cancellation charge will apply to reservations cancelled or amended less than 07 Days prior to arrival date.		
- Group reservations		
1. No cancellation charges will be raised if part of, or the entire reservation is cancelled 30 days prior to arrival. If part of, or the entire reservation is cancelled less than 30 days prior to arrival than the following applies:		
21 - 29 Days prior to arrival	25% of the total amount	
14 - 20 Days prior to arrival	50% of the total amount	
07 - 13 Days prior to arrival	75% of the total amount	
06 - 00 Days prior to arrival	100% of the total amount	
Check-In: 14h00		
Check-Out: 12h00		
Please sign and return this confirmation to the FAX number or address detailed above.		
SIGNATURE:		DATE:

## Flight Planning:

Fuel must be pre arranged at Inhambane and I will need to know your fuel requirements Note Piper Cubs flight time from Maputo to Inhambane approx 3 hours. Flight time from Inhambane to Vilankulu 1.3 hours @ GS of approx 90 knots.

1. In total you could work on 13 hours flight time at 90 knots
2. Fuel costs at Inhambane are US\$1.60 per litre (still to be confirmed) and payable by the end of April 2007. Mogas could also be arranged.
3. Banking details for the fuel will be supplied to those who confirm with me. via e-mail or fax.
4. For ease of record keeping I would prefer a written response. My fax number: 012 346 3674.
5. I will be keeping the master list and need to liaise with the Mozambique Aero Club and the Mozambique Civil Aviation Authority.
6. To facilitate arrangements with the Mozambique authorities please inform me (again in writing within the Excel spreadsheet) your:
7. Aircraft:
  - ▶ Registration,
  - ▶ Type,
  - ▶ Colour
  - ▶ Weight.
8. Pilot:
  - ▶ Name
  - ▶ License number.
9. Number of passengers.
10. Fuel requirements (quantity) at Inhambane. I am going to be requesting Mogas. ☺

I look forward to your participation; responses and another wonderful fly away.

Best wishes

Horace Blok  
0832616300  
[hab@acns.co.za](mailto:hab@acns.co.za)